



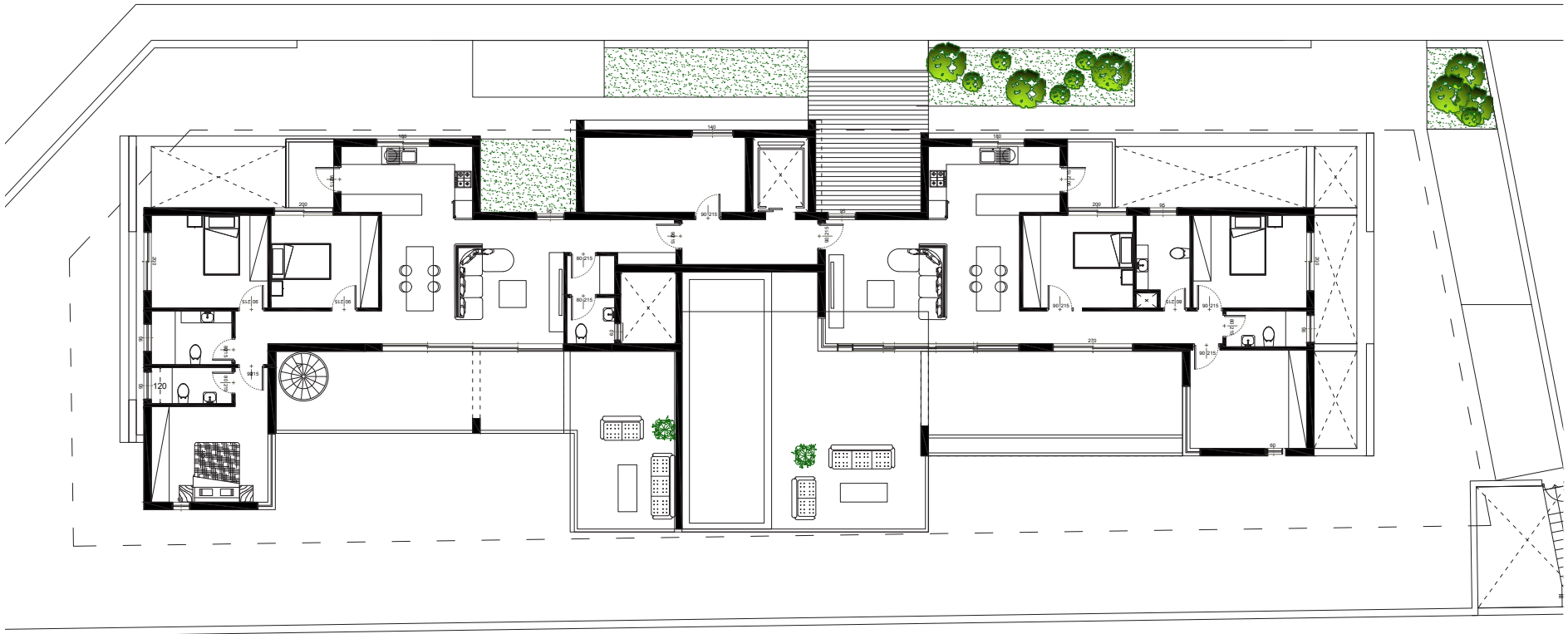
KINGPROP
D E V E L O P M E N T

SEAGREEN RESIDENCES
A RESIDENTIAL PROJECT IN LIMASSOL

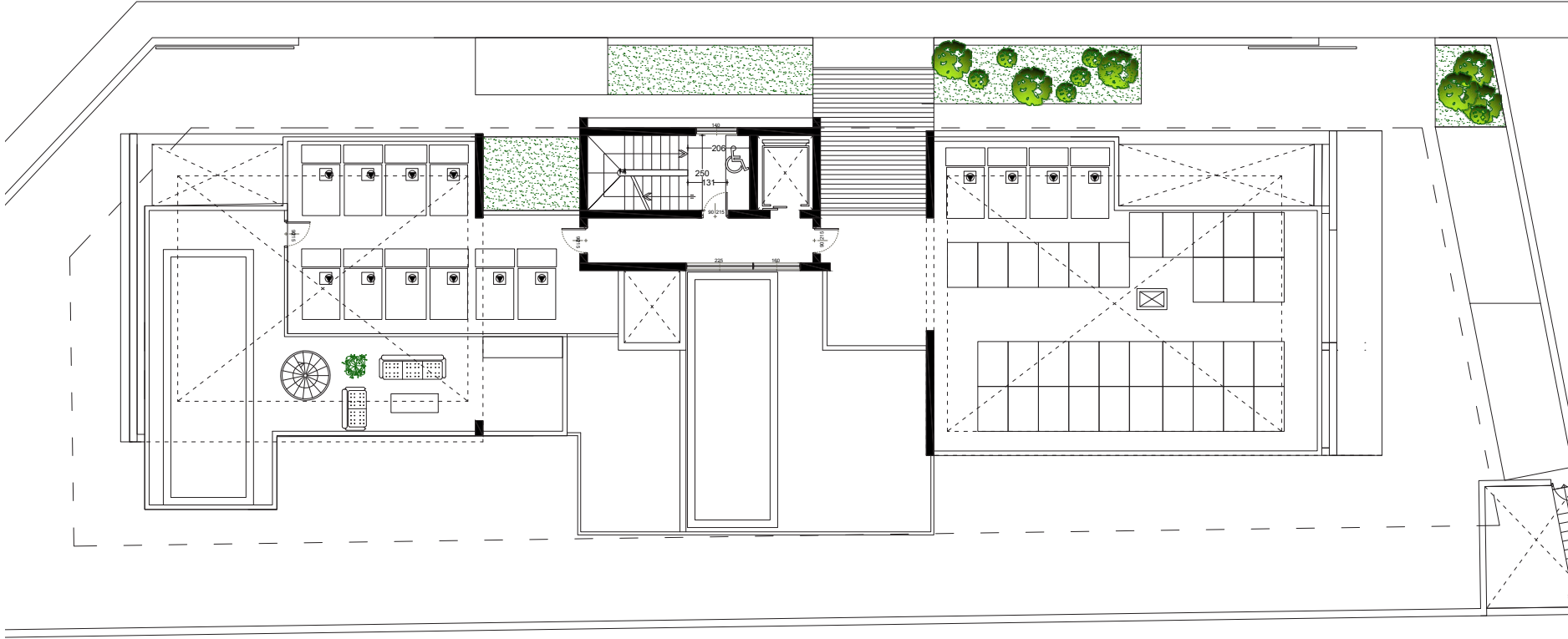
WEB: **KINGPROP.CO**
PHONE: **+357 25 366 660**
EMAIL: **INFO@KINGPROP.CO**

30 GEORGIU A'. STREET,
OFFICE G-H GERMASOGEIA,
4047, LIMASSOL, CYPRUS

The images, illustrations, and renderings displayed on this website are for illustrative purposes only. They represent artistic impressions and may not reflect the final product. Actual designs, materials, and finishes may vary from those shown. KingProp Development reserves the right to make modifications to designs and specifications without prior notice.



5th FLOOR PLAN
1:100



ROOF PLAN
1:100